

# Optoma Interactive Flat Panel - 3863RK

## Product Specification

Model	Optoma 3863RK
Size	86"
Android	Android 14.0 (EDLA)
Resolution	3,840 x 2,160 (4K UHD)
Brightness	450 nits
Chipset	RK3576
CPU	Octa Core (A72*4 + A53*4)
GPU	ARM Quad-core Mali-G52 MC3
RAM	8 GB
ROM	32 GB
Speaker	20W*2
Built-in Camera	X
Mic Array	X
Glass	Anti Glare + Anti Fingerprint
Light Sensor	Yes
Air Gap	Zero bonding Gen 1: 0-0.8 mm
Touch Accuracy	+/- 2mm (over 90% Area)
Touch Height	< 1mm (over 90% Area)
Touch Response Time	≤5ms
Writing	Up to 50 points touch (32 points touch in Android, 50 points touch in Windows, 10 points writing)
USB C In	2 Display & PD (Front: PD 100W & Rear: PD 15W)
Type C Out	0
HDMI in	3 (Front*1 & Rear*2)
HDMI out	1
DP In	1 (v1.2)
VGA In	1
SPDIF	1
USB 2.0	1 (FW upgrade)
USB 3.0	4 (Front*2, Rear*2)
USB Touch	2
RS232	1
RJ45	2
Audio In	1
Audio Out	1
Memory Card Slot	1
Front-side Quick Button	Yes

Model	Optoma 3863RK
Auto Pen Detection	-
Whiteboard	V, support Google classroom integration (on-site view) & IFP-to-IFP-Web Collaboration (optional)
WB - AI Handwriting Recognition	V, Text & Formula & Shape
WB - Text Editor	V
WB - Pressure Pen	V, writing thickness by pen pressure level
WB - Smart Sketch	-
WB - Sticky Notes	V
Display Share (May/Y2024) [Renamed from Creatvie Cast Pro]	V, support remote annotation & Smart laser pointer & iPad Moderation mode
DS - Mirroring	V, support 4-split screen
DS - Annotation	V
DS - Laser Pointer	V
DS - Miracast	V
Annotation (Side Bar)	V
AirShare (Participation Tool)	V, Vote/Responder/Selector/Message
File Manager with Cloud Storage	V
Video Recording	V (Android Only)
Dual APP Mode	V
4-Windows Mode	V
PIP (Picture in Picture) Mode	V
Triple Screen Mode	-
OMSC/OMSL	V, Optional
OTA	V
Marketplace	V, Google PlayStore
Google Voice Assistant	V
Customized Guesture Control	V
OAM (Optoma Account Management)	V, combine whiteboard & OMS accounts into One
InfoBoard	V, Q4/E'24



# Optoma Interactive Flat Panel - 3863RK

## Product Specification

Model	
Product no.	3863RK
Regulatory no.	SBLSRK
Certification	CE, FCC, RoHS, CB, Energy Star, TUV low blue light, TUV flicker free, IC, SGS IP5x certified
Display	
Back light	Direct type LED (D-LED)
Size (diagonal)	86"
Resolution	3840 x 2160 (4K UHD)
Aspect Ratio	16:9
Brightness	450 nits (typ.)
Contrast ratio	4,000:1
Viewing angle	178° / 178°
Response time	8ms
Life	50,000 hours
Speaker count	2
Watts per speaker	20W
Glass	Tempered Glass with Anti Glare + Anti Fingerprint
Haze (Maximum)	25%
Ambient light sensor	Yes
Glass Hardness	7H
Physical spec	
Dimensions (W x D x H)	1981 x 1187 x 117
Wall-hanging screw spec	M8*25mm
VESA holes	800*600
OPS slot	Yes
Accessories	Power Cord
	Remote Control
	Quick Start Guide
	USB Cable
	HDMI Cable
	Writing Pen x 2
	WiFi Module

Connections	Inputs 3 x HDMI 2.0 (Front*1 & Rear*2), 1 x VGA, 1 x Audio 3.5mm, 1 x USB 2.0, 4 x USB 3.0, 2 x RJ45, 1 x DisplayPort, 1 x Mic 3.5mm, 2 x USB-C (Front*1 & Rear*2, Front*1 support PD65W/Display/Touch/USB 3.0/LAN Network Sharing; Rear*2 support PD15W/Display/Touch/USB 3.0/LAN Network Sharing), TF card slot*1 (Embedded)
	Outputs 1 x HDMI 2.0, 1 x Audio 3.5mm, 1 x SPDIF (Optical), 2 x RJ45 (In/Out)
	Control 2 x USB Touch port, 1 x RS232
	Bezel size (top) 28.6mm
	Bezel size (bottom) 58.70mm
	Bezel size (left) 28.6mm
Touch system	Bezel size (right) 28.6mm
	Operating conditions 10% ~ 90% RH
	Operating temperature (min) 10°C
	Operating temperature (max) 90°C
	Net weight 64.5 kg
	Gross weight 81.5 kg
Touch system	
System	Windows10/Windows11/Linux/Mac (1 Touch point only)/Android/Chrome
Touch accuracy	< 1mm (over 90% Area)
Touch point	40 points touch at Android (EDLA); 50 points touch at Windows
Touch tool	Finger, Passive infrared pen
Pressure Pen	Supported
Power	
Power supply	AC 100-240V, 50/60 Hz
Power consumption (standby)	0.5W
Power consumption (max)	450W



Operation System	
System version	Android 14.0 (EDLA)
CPU	Octa Core (A72*4+A53*4)
GPU	G52 MC3
RAM	8GB
Storage	64GB
Wi-Fi	802.11a/b/g/n/ac/ax, dual band 2.4G & 5G
Bluetooth	Bluetooth 5.2
Network	10/100/1000Mbps
OSD / display languages	16 languages: Arabic, Czech, Danish, Dutch, English, French, German, Italian, Polish, Portuguese, Romanian, Russian, Spanish, Swedish, Chinese (traditional), Turkish
Software	
Google PlayStore	Yes
Whitboard	Support text editor & embedded browser (Access Google translation for text-to-speech) & pressure pen & smart sketch & Google classroom integration & AI recognition (Text/Shape/Math formula)
Display Share	Support remote annotation & smart laser pointer & iPad Moderation mode
Account login & Cloud access	Support to access via QR code
Dual APP Mode	Yes
PIP (Picture in Picture) Mode	Yes

# Spec Comparison | New 33 vs New 53 series

## Software

Model	Optoma 32 series	Optoma 33 series (NEW)	Optoma 52+ series	Optoma 53 series (NEW)
Auto Pen Detection	-	-	V	V
Whiteboard	V, support Google classroom integration & IFP-to-IFP Collaboration & Web Collaboration (optional)	V, support Google classroom integration (on-site view) & IFP-to-IFP-Web Collaboration (optional)	V, support Google classroom integration & IFP-to-IFP Collaboration (optional)	V, support Google classroom integration (on-site view) & IFP-to-IFP-Web Collaboration (optional)
WB - AI Handwriting Recognition	V, Text & Formula (FOTA in Y2024)	V, Text & Formula & Shape	V, Text & Formula (FOTA in Y2024)	V, Text & Formula & Shape
WB - Text Editor	V	V	V	V
WB - Pressure Pen	-	V, writing thickness by pen pressure level	-	V, writing thickness by pen pressure level
WB - Smart Sketch	-	-	-	V, generate a picture by simple drawing
WB - Sticky Notes	-	V	-	V
Display Share (May/Y2024) [Renamed from Creatvie Cast Pro]	V, support Smart laser pointer & iPad Moderation mode	V, support remote annotation & Smart laser pointer & iPad Moderation mode	V, support remote annotation & Smart laser pointer & iPad Moderation mode	V, support remote annotation & Smart laser pointer & iPad Moderation mode
DS - Mirroring	V, support 4-split screen	V, support 4-split screen	V, support 4-split screen	V, support 4-split screen
DS - Annotation	-	V	V	V
DS - Laser Pointer	V	V	V	V
DS - Miracast	V	V	V	V
Annotation (Side Bar)	V	V	V	V
AirShare (Participation Tool)	V	V, Vote/Responder/Selector/Message	V, Vote/Responder/Selector/Message	V, Vote/Responder/Selector/Message
File Manager with Cloud Storage	V	V	V	V
Video Recording	V (Android Only)	V (Android Only)	V (Android Only)	V (Android Only)
Dual APP Mode	V	V	V	V
4-Windows Mode	-	V	-	V
PIP (Picture in Picture) Mode	V	V	-	V
Triple Screen Mode	-	-	-	V, Duplicate/Extension support by HDMI/Type C for extra 2 screens and 1 extra screen support touch
OMSC/OMSL	V, Optional	V, Optional	V, Optional	V, Optional
OTA	V	V	V	V
Marketplace	V, Optoma	V, Google PlayStore	V, Optoma	V, Google PlayStore
Google Voice Assistant	-	V	-	V
Customized Gesture Control	-	V	-	V
OAM (Optoma Account Management)	V, combine whiteboard & OMS accounts into One	V, combine whiteboard & OMS accounts into One	V, combine whiteboard & OMS accounts into One	V, combine whiteboard & OMS accounts into One
InfoBoard	-	V, Q4/E'24	-	V, Q4/E'24

# Google-EDLA-certified compatibility

Google EDLA (Enterprise Device Licensing Agreement) certification ensures compatibility and optimal performance with Google applications and services.

Compatibility with the latest Google updates are also guaranteed. Users can take advantage of the ever-evolving Google educational tools and innovations to enhance their teaching methodologies and engage students more effectively.



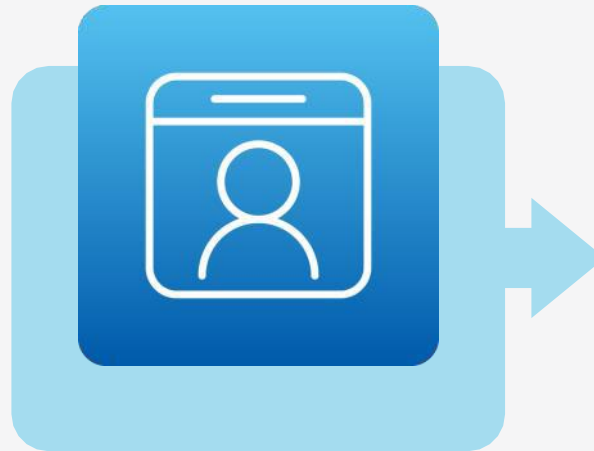
# Optoma Account Manager (OAM)

Get personalized interface and manage account in one place with Optoma account

With an **Optoma Account registered**, administrators can easily access all Optoma software services with a single set of credentials, control users' permissions, and manage device settings in "My Account."

Each user gets a personalized interface and authorized settings. In addition, it's convenient to manage personal account/license information and subscription plans in one place.

**Single sign-on integration with Optoma account registered and enjoy free-trial for premium features for 2025.**



One account to access all software and enjoy premium features and services.

Control and manage account and device information

One account for all applications  
[Optoma account register page](#)



# OSS creates a smart teaching and learning environment that traditional classroom can't



**Display Share**



**Whiteboard**



Google for Education  
Partner



Google Classroom  
Integrated



Work with popular  
conferencing and cloud  
storage apps

## Easy and simple to get started



Start a lesson and collaboration with IFPs simply via the QR code or session code with participants' personal devices.

## Ready-made resources to prepare lessons effortlessly



A wider variety of pre-made resources and integrated thirty party apps help educators prepare interactive teaching materials easily and quickly before the class.

## Perfect for real-time collaboration during class



Every student gets a voice. OSS brings collaboration and connection tools to classroom, encouraging students to actively engage and interact in class or remotely.

## Review and access materials after class



Students can access all the teaching material on cloud-based Whiteboard whenever they want. Learning won't stop after class.



**Whiteboard**  
Empowering collaboration

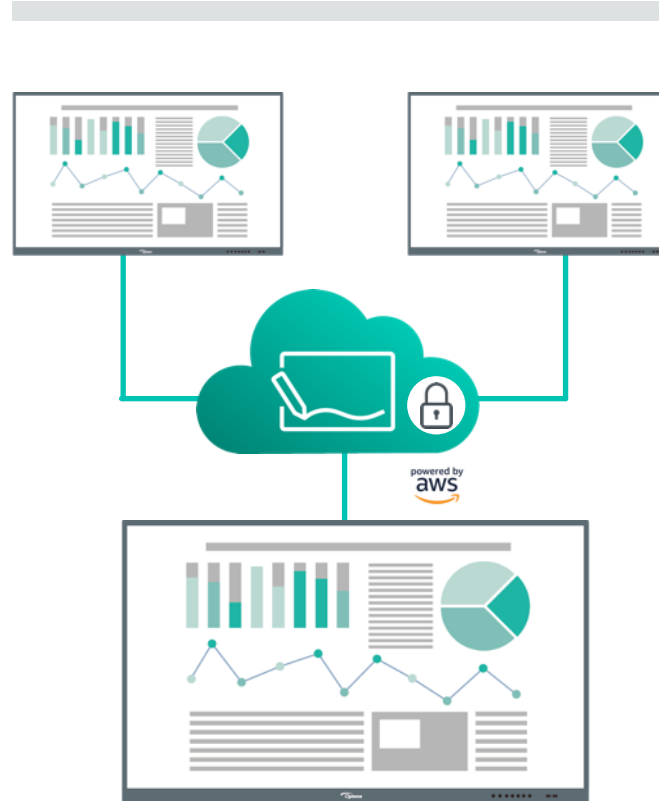
**Built on AWS to provide  
enterprise grade security**



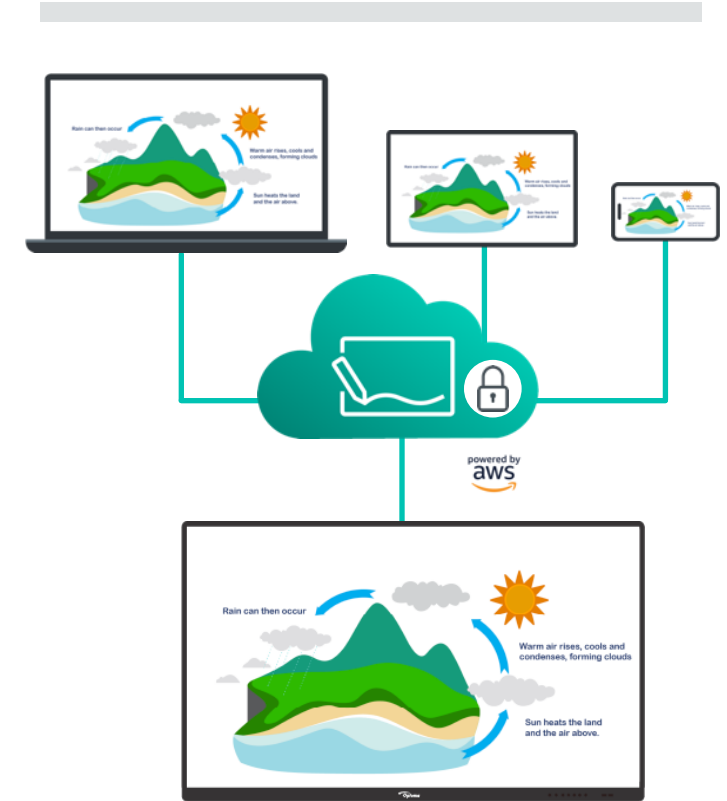
Built with security in mind, the cloud-based whiteboard protects all files or materials saved on the cloud with data encryption technology powered by AWS. The cloud infrastructure reduces security risk, protects your networks, and keeps all your files synchronized and secured.



## Via IFPs



## Via multiple devices remotely



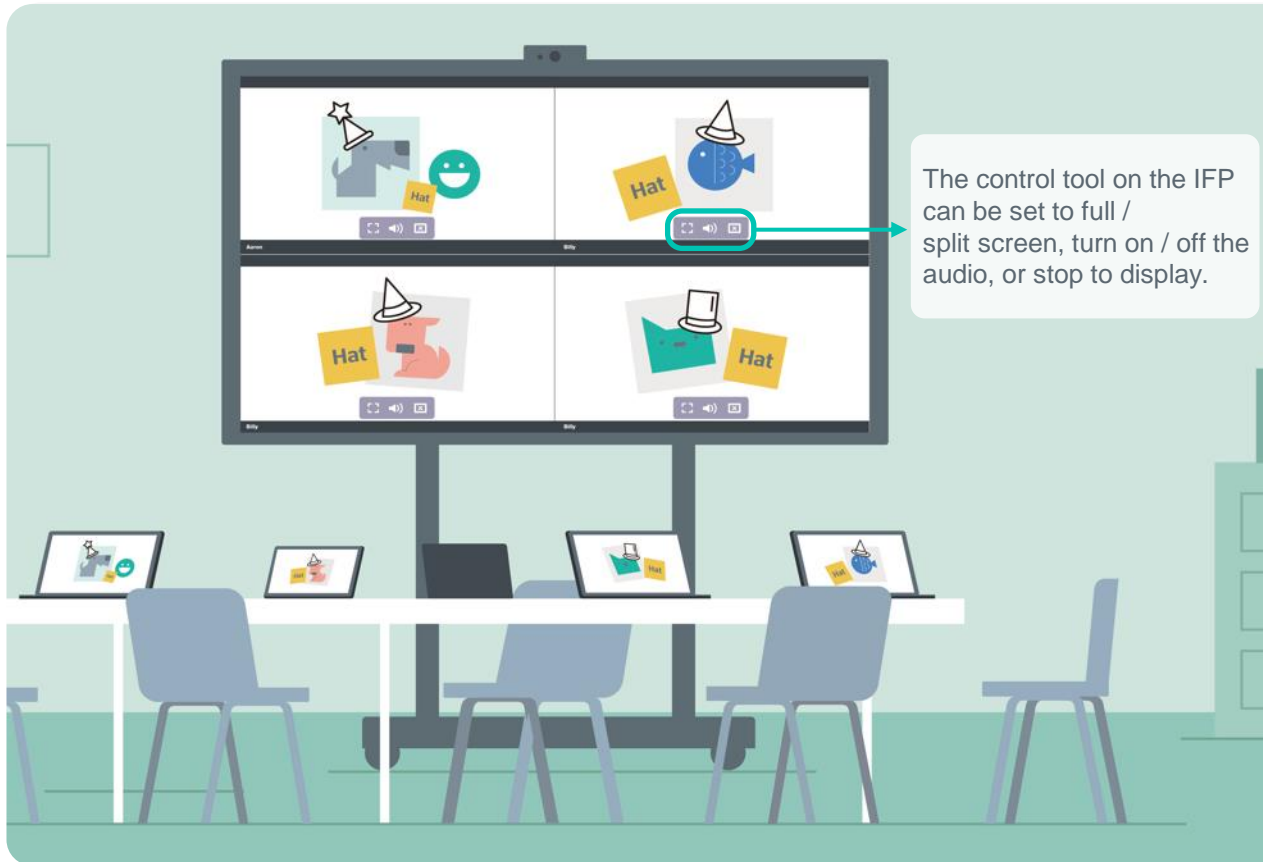


## Display Share

Wireless sharing

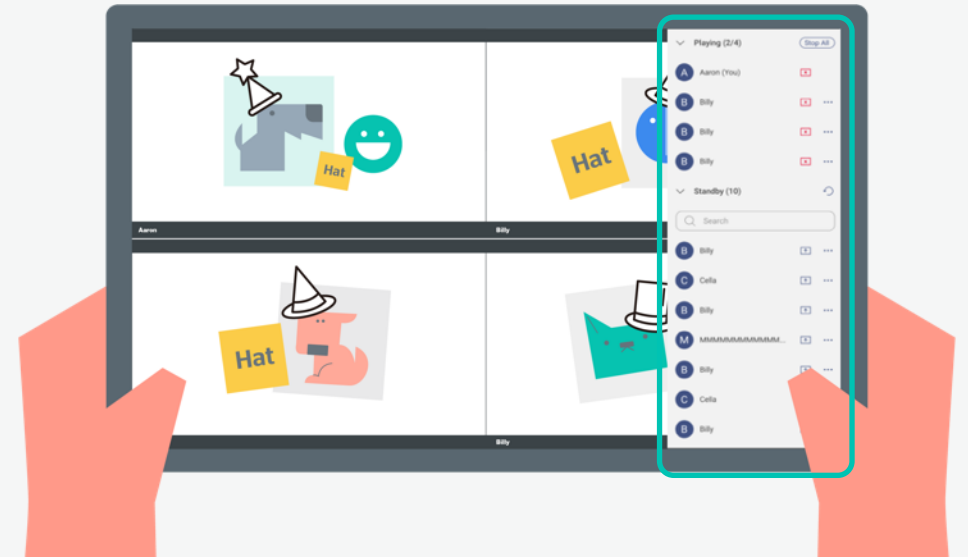
## Students take turn to share ideas and learning outcomes

Lessons are livelier when everyone is involved. Teachers can control which student's display can be displayed. Students take turns to share homework, ideas, and learning outcomes wirelessly via Display Share without leaving their seats.



## Control panel

Has the authority to decide which participant's screen will be displayed or stop to display.



\* participants' devices need to be connected to the same networking via Display Share.